

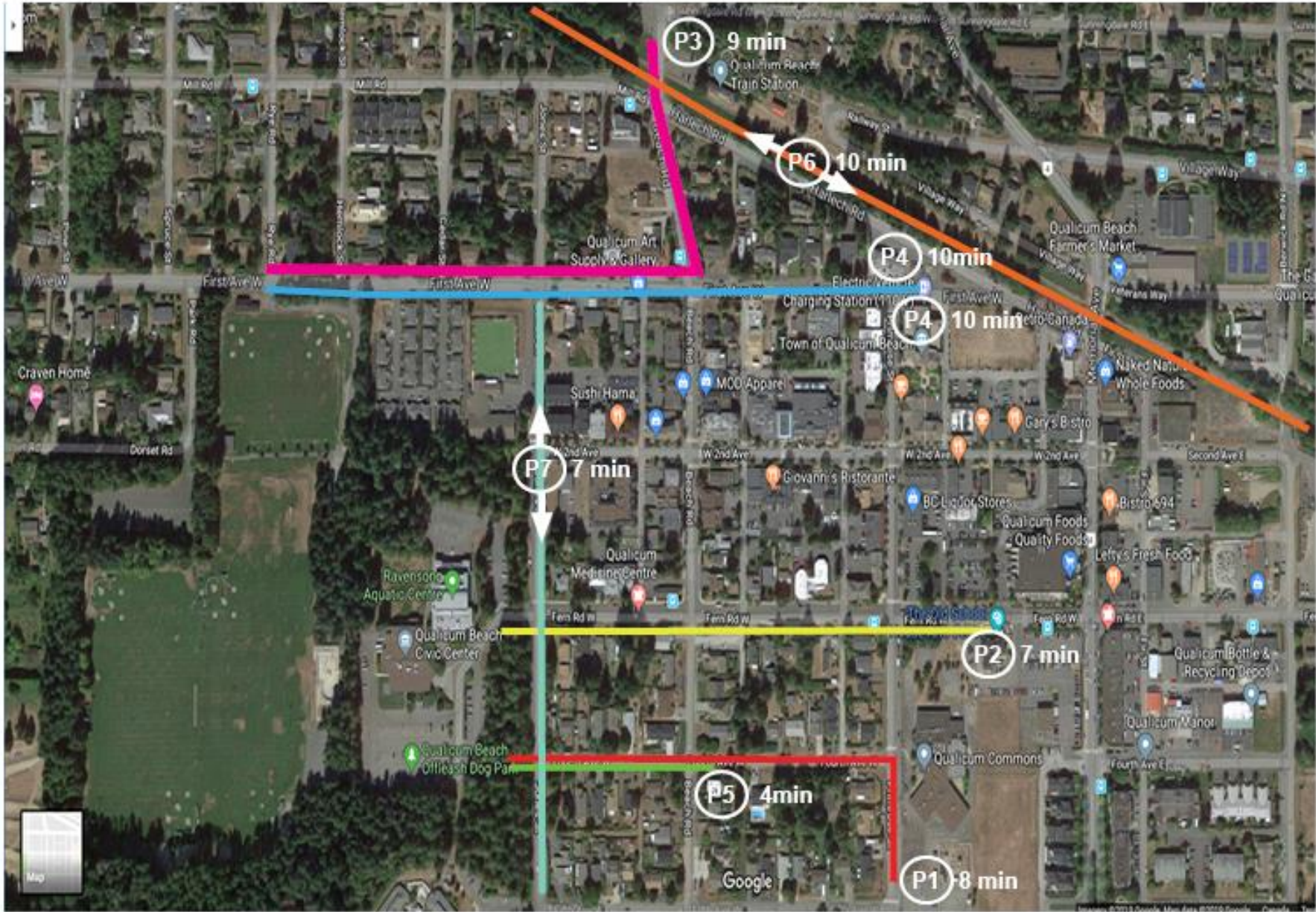
Mini World Cup Parking & Amenities



Parking Options



Civic Centre parking stalls	As per image above
Community Park public parking stalls (off Park Road)	As per image above
Qualicum Commons parking stalls (Primrose Street at the Fifth Ave W intersection)	P1 on map – 8 min walk https://goo.gl/maps/HnkKykN2mKBVz1B5A
Public parking stalls across from Qualicum Foods	P2 on map – 7 min walk https://goo.gl/maps/JV1pN5Hu2Jm4U9aw5
Railway Station parking stalls (off of Beach Road near Sunningdale Road)	P3 on map – 9 min walk https://goo.gl/maps/k6VF8YkPhisYEd3A6
Underground parkade - Town Hall – access off First Avenue and parking space across the road on First Ave W	P4 on map – 10 min walk https://goo.gl/maps/BSc32vgD1XZshnde9
Gravel parking lot on the corner of Beach Road and Fern Road	P5 on map – 4 min walk https://goo.gl/maps/MvfKAngH7g1uspgz5
Harlech Street – street parking	P6 on map – approx. 10 min https://goo.gl/maps/kargToRaLEV6XnQD6
Jones Street – street parking	P7 on map – approx. 7 min walk https://goo.gl/maps/ab7wGma8i6AwEHag8
Kwalikum Secondary School (KSS) parking stalls (266 Village Way)	18 min walk https://goo.gl/maps/V9Qj37LFrRsXFe3x6
Side streets in the downtown core that aren't marked as "reserved"	





Pristine natural beauty is our main attraction in Qualicum Beach! With over 280 hectares of Town owned parks and green space with 14 kilometres of maintained trails. *Must Do's* include:

Heritage Forest – enjoy the quiet solitude of the lush coastal forest with remnant pockets of old-growth Douglas Fir, Western Red Cedar, Hemlock, Grand Fir and Sitka Spruce in the 20-hectare Heritage Forest located in the heart of Qualicum Beach.

Promenade Walk – The Town of Qualicum Beach has over 4 kilometres of curving, postcard-perfect sandy beaches. The promenade is lined with picnic tables, shade trees, a wash/change room and lots of parking. Located along Island Highway 19A is a paved seawall walkway with stairwells to access the beach. Centrally located along this waterfront park is the newly opened concession Shore!

Community Park – the Community Park is comprised of over 38 hectares, half of which is treed with second-growth forest. There are over 2 kms of walking trails some of which are designated as off-leash dog trails.

Seaside Nature Park – the Brant Viewing Area is located in the west end of Qualicum Beach, along the waterfront. The area provides great viewpoint from an elevated bird-watching platform/gazebo for birdwatchers and photographers includes a large parking lot, a grassy area and picnic tables and benches.

We encourage you to explore our unique attractions, many shops, galleries and restaurants in our village centre.

More Information

- Town of Qualicum Beach Recreation and Parks Guide <https://www.qualicumbeach.com/trails-and-parks>
- Visit the Qualicum Beach Downtown Business Association <https://www.qualicumbeachdowntown.ca/dine>
- Discover Parksville & Qualicum Beach website - <https://www.visitparksvillequalicumbeach.com>
- Virtual Discovery Guide - <https://secure.viewer.zmags.com/publication/63ef9be8#/63ef9be8/10>
- Visit Qualicum Beach Information Centre - open Monday to Saturday from 9am to 4pm (located on the waterfront across from Shell) <https://qualicum.bc.ca/>
- Special Deals and Coupons - <https://www.visitparksvillequalicumbeach.com>
- Places to eat – there are so many great places – let Google help you decide!



Complete our Online Survey for All-Season Turf Field

The Town of Qualicum Beach is investing in an all-season field upgrade, and we would like your input! See the link below to complete an online survey.

The field upgrade will see the upper playing fields in the Qualicum Beach Community Park upgraded to an all-season turf surface. This portion of the fields will be realigned to build two full-sized turf soccer pitches running east-west.

The field will be designed to allow a multitude of sports to be played that include not only soccer, football, baseball but also others such as lacrosse, field hockey and rugby.

The lighting system would also be upgraded to LED and the control system would be changed to a token-based system rather than a remotely managed system.

As Mini World Cup participants, you are best poised to answer questions about the all-season turf field.

Complete the online survey [HERE](#)